

10/31/2008 11:23:44 AM  
C:\Projects\Caltrans\TMC\TMC BLDG-Gretchen.rvt

F

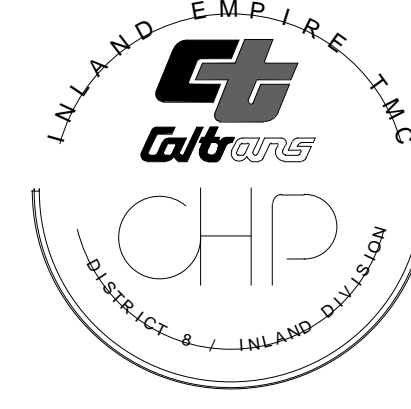
D

C

B

A

PROJECT



PROJECT ADDRESS  
1392 VICTORIA STREET  
FONTANA, CA 92336

CLIENT



STATE OF CALIFORNIA  
DEPARTMENT OF GENERAL SERVICES  
REAL ESTATE SERVICES DIVISION  
PROJECT MANAGEMENT BRANCH  
707 THIRD STREET, SUITE 3-305  
WEST SACRAMENTO, CA 95605  
PROJECT DIRECTOR: RAPAT ALAFRANJI  
TELEPHONE: (916) 376-1738

DESIGNER

DMJM H&N | AECOM

999 TOWN & COUNTRY ROAD, ORANGE, CALIFORNIA 92668  
T: 714-967-2400 F: 714-967-2729 www.dmjmn.com

CONSULTANT

DSA STAMP

IDENTIFICATION STAMP  
DIVISION OF THE STATE ARCHITECT  
OFFICE OF REGULATION SERVICE

APPL. #: 04-109200-2

AC FLS SS  
DATE

FILE NUMBER: RESD

STATUS

JULY 30, 2008

ISSUE

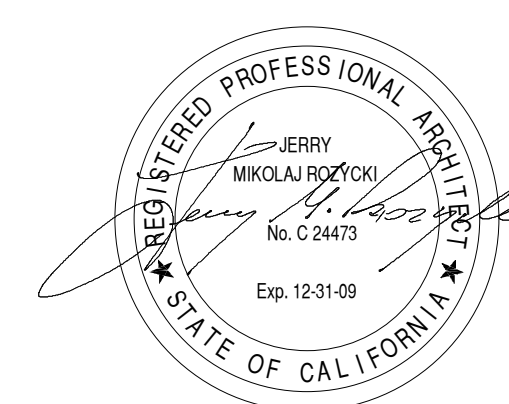
D	10/31/08	BID PERIOD ADDENDUM #6
MARK	DATE	DESCRIPTION

PROJECT NO: 60004333.4000

DRAWN BY: GJ

CHECK BY: JR

STAMP

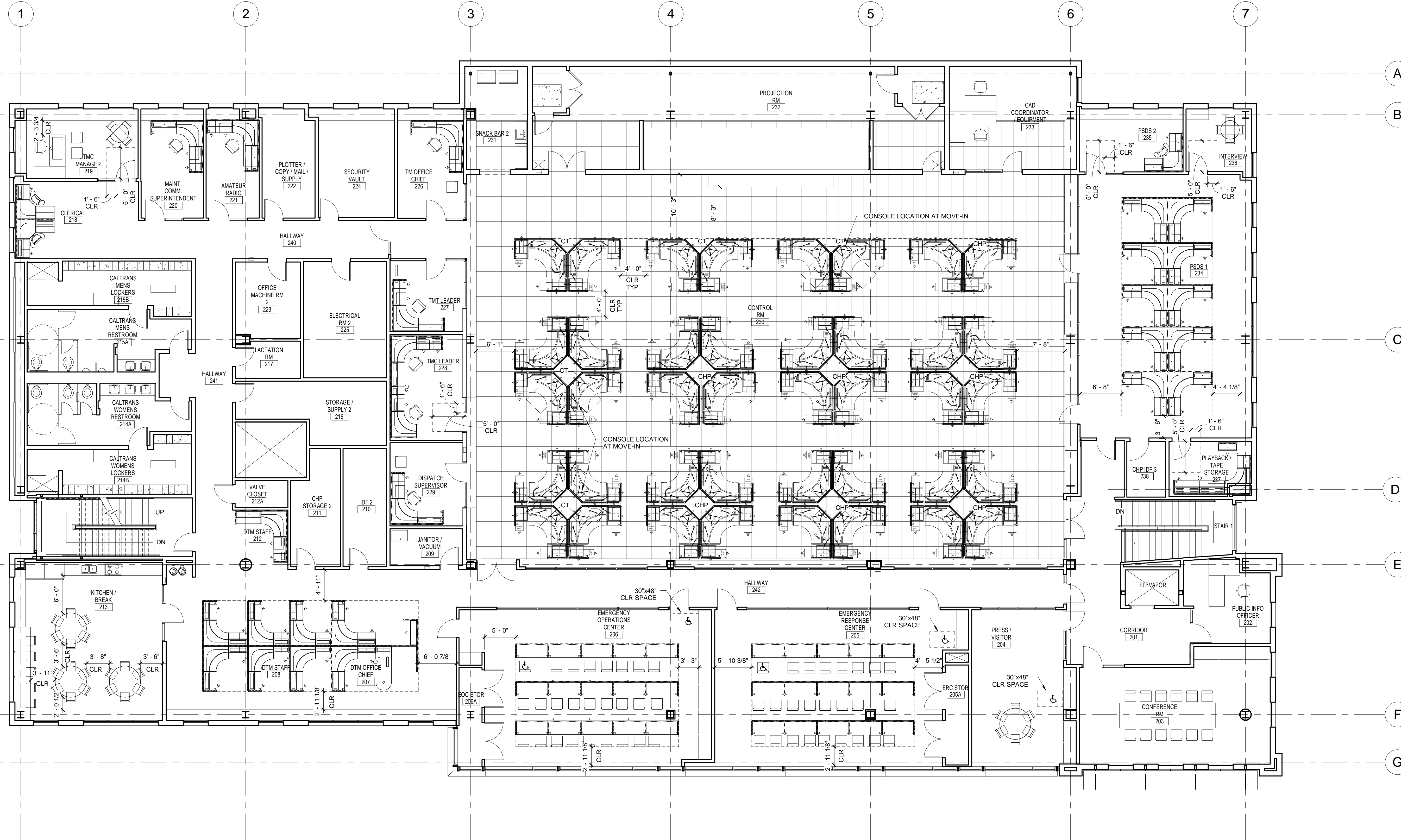


SHEET TITLE

SECOND FLOOR  
FURNITURE PLAN

A-612

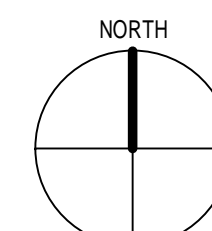
© 2006 DMJM H&N, Inc.



NOTES:

1. THIS SHEET IS FOR REFERENCE ONLY. FURNITURE IS STATE FURNISHED AND INSTALLED.
2. ACCESSIBLE ECTERN MUST HAVE KNEE SPACE OF AT LEAST 27" HIGH, 30" WIDE AND 18" DEEP.
3. TOP OF TABLES AND COUNTERS SHALL BE 28" TO 34" ABOVE FINISH FLOOR.
4. ITEMS NOTED "NIC" ARE NOT PART OF THIS DSA PROJECT APPROVAL.

SCALE: 1/8" = 1'-0"



1 SECOND FLOOR FURNITURE PLAN

A-612 A-301 1/8" = 1'-0"